

208 Park Central, Liverpool, L3 0AY
Asking Price £135,000 Leasehold

www.
cityresidential
.co.uk



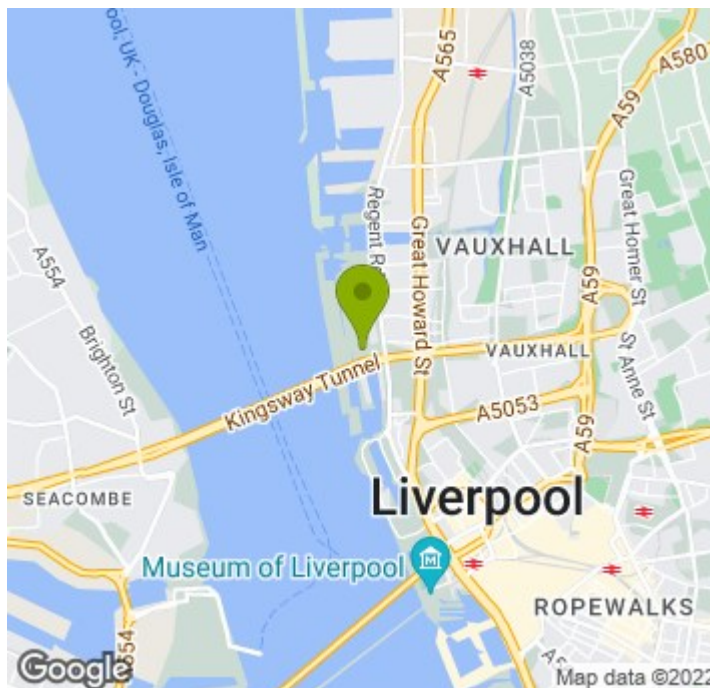
About the Property

Contemporary living at its very best!

City Residential are delighted to offer for sale this one bedroom property. Located on Jesse Hartley Way, Park Central is part of the Liverpool Waters multimillion pound plan to expand the city along Liverpool's famous and historic docklands.

The apartment is immaculately presented and well proportioned and is located and briefly comprises; Entrance hall, lounge/dining area, modern high gloss fitted kitchen, double bedroom with fitted robes and separate shower room.

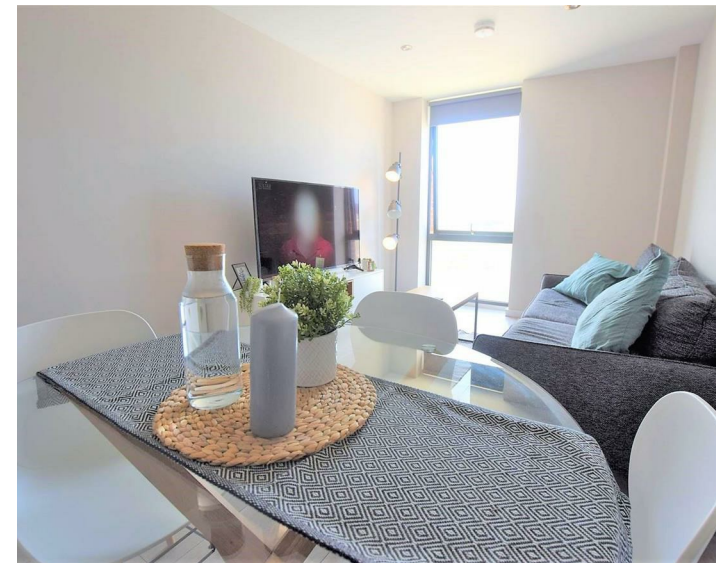
We expect high demand for this property, therefore early viewing is advised to avoid disappointment.



- Modern one bedroom apartment
- Immaculately presented throughout
- Docklands location
- Deceptively spacious
- Service charge - £1,308.39 per annum
- Ground rent - £250.00 per annum
- Lease - TBC
- Council tax band - TBC
- EPC rating - B

Energy Efficiency Rating

	Current	Potential
Very energy efficient - lower running costs		
(92 plus) A		
(81-91) B	83	83
(69-80) C		
(55-68) D		
(39-54) E		
(21-38) F		
(1-20) G		
Not energy efficient - higher running costs		
England & Wales	EU Directive 2002/91/EC	



City Residential
81/87 Victoria Street, The Old Haymarket, Liverpool L1 6DG
T: 0151 231 6100 F: 0151 231 6105
E: sales@cityresidential.co.uk



WWW.
cityresidential
.co.uk